



**Shusen Wang**  
**Alexander Trichtchenko**  
**Yi Luo**

*Canada Centre for Remote Sensing*

**CANADA'S NATURAL RESOURCES**

**NOW AND FOR THE FUTURE**

[nrcan.gc.ca](http://nrcan.gc.ca)



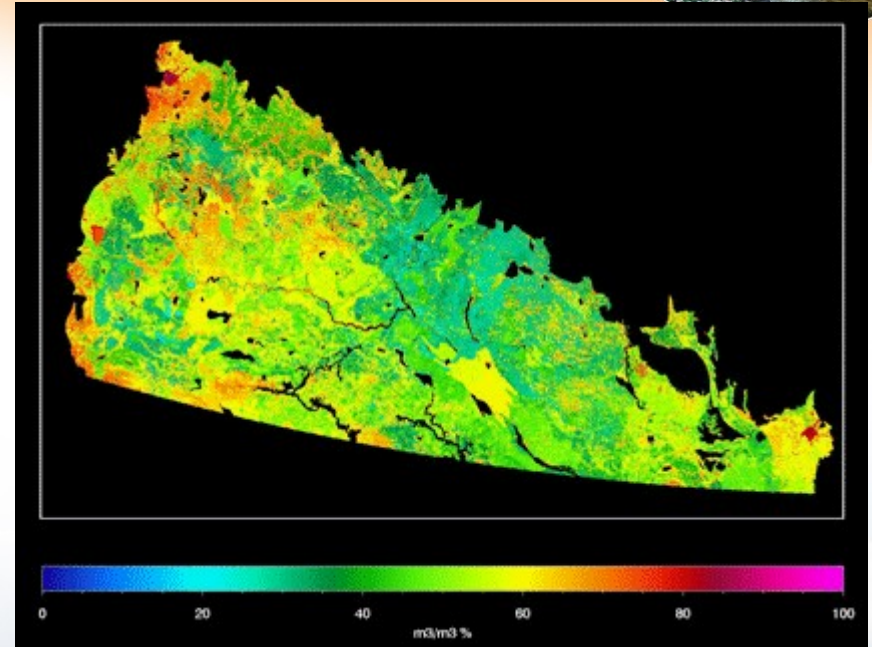
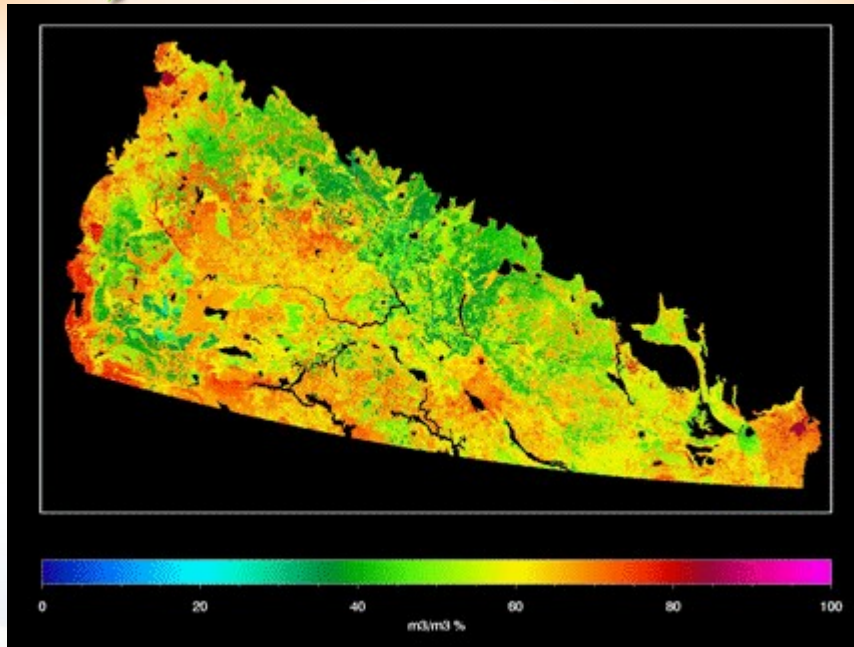
Natural Resources  
Canada

Ressources naturelles  
Canada

**Canada**



# Soil moisture from EALCO model



Soil water content (represented as  $V_{H_2O}/\text{porosity}$ ) in July. Left is 1960-2000 average. Right is year 1988.

Data represent soil depth of 10-40cm where 30% of plant roots were initialized in this simulation. The model switches for irrigation and groundwater uplift were turned off so there were no irrigation and groundwater support (for ET/plant use) in this simulation.

Soil texture/porosity data from AAFC were used in this simulation.

10km climate data from AAFC were used together with CWEEDS station data (provide 30-minute temporal variations).

Vegetation cover of 2000 was used for the 41 years simulation.

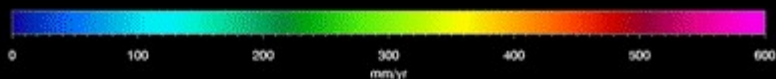
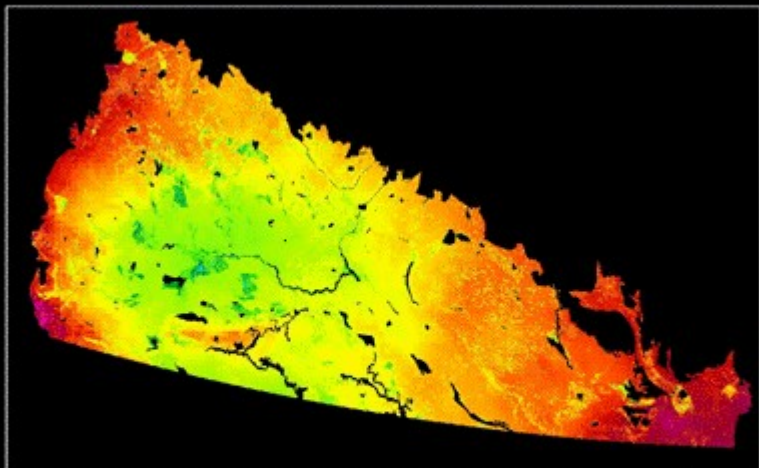




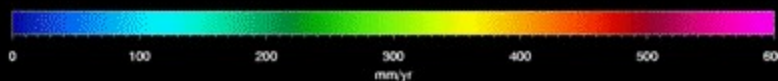
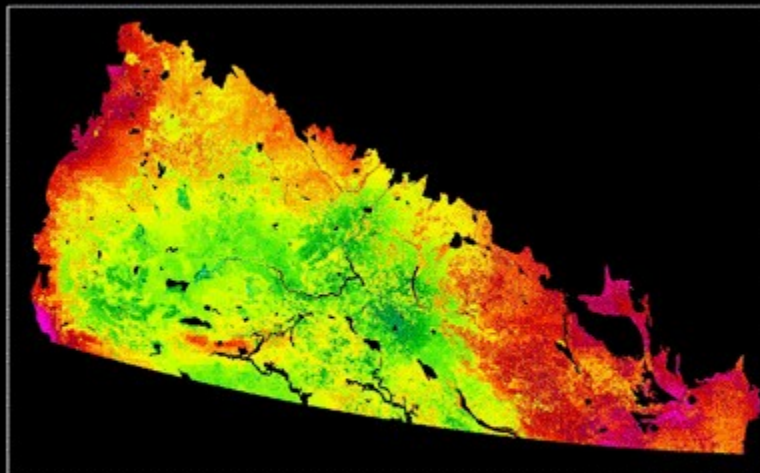
# Evapotranspiration



ET: MEAN



ET: 1988

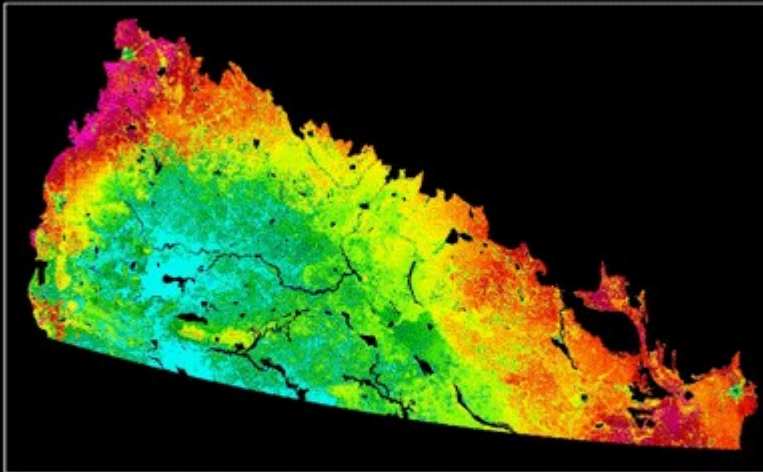




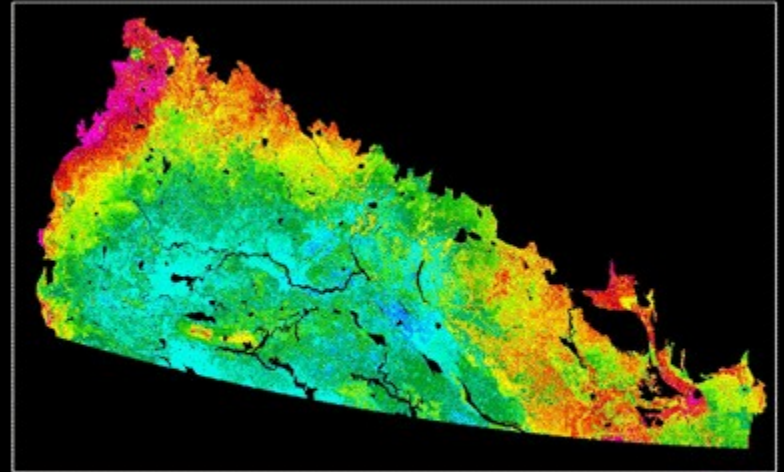
# NPP



NPP: MEAN



NPP: 1988



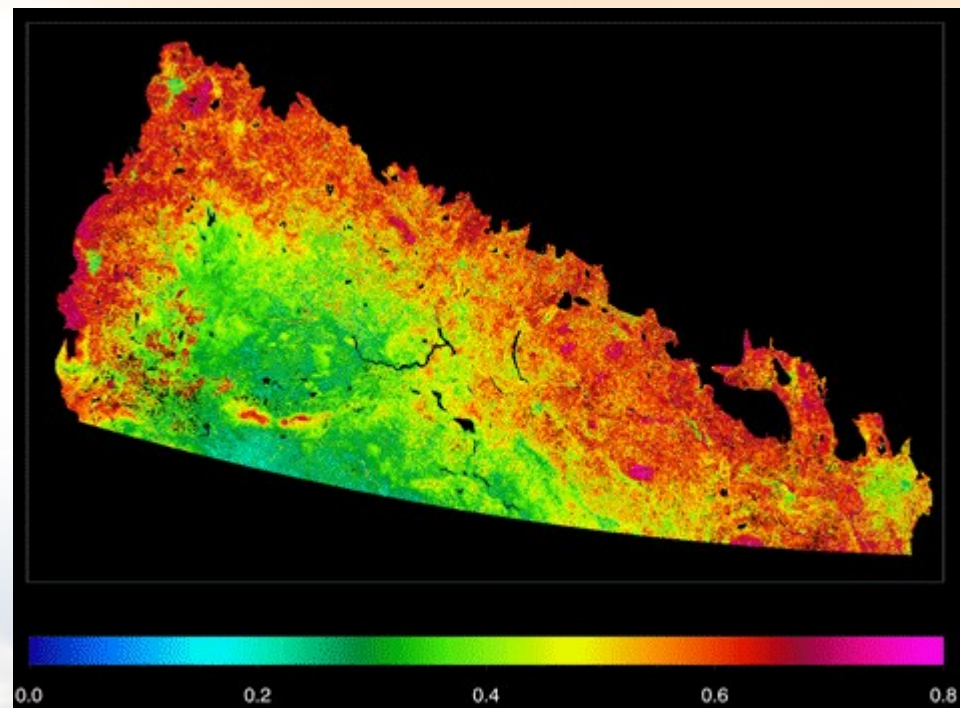
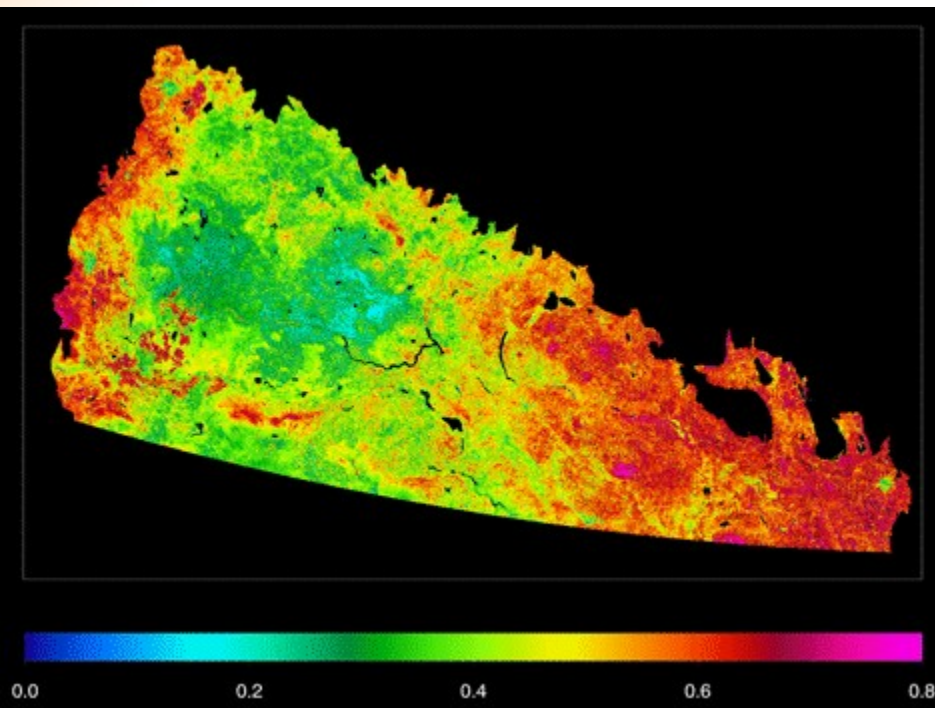
Natural Resources  
Canada

Ressources naturelles  
Canada

Canada



# NDVI



Left 2002, right 2006  
Resolution 250m



Natural Resources  
Canada

Ressources naturelles  
Canada

Canada