

Prairie Regional Adaptation Collaborative (PRAC)

Presented By:

Ramon Sales, Jr.

**Climate Change and Environmental Protection
Manitoba Conservation**

.....

Extremes Workshop

Inn at the Forks, Winnipeg, MB

February 9, 2011



Presentation Overview

- 1. Regional Adaptation Collaborative (RAC)***
- 2. Prairie Regional Adaptation Collaborative (PRAC): Objectives, Themes and Deliverables***
- 3. Key Issues***
- 4. Conclusion***

Regional Adaptation Collaboratives (RACs)

- Goal: catalyze coordinated and sustained climate change adaptation decision-making and action
- Six RACs
 - British Columbia RAC
 - Ontario RAC
 - Quebec RAC
 - Atlantic RAC
 - Northern RAC; and
 - Prairie RAC

Prairie Regional Adaptation Collaborative (PRAC)

- To enhance capacity to integrate climate change adaptation into water resources management, drought and excessive moisture planning and terrestrial ecosystem management decision-making.
- Total funding of \$6.6M for 2010-2012; formally launched in July 2010

Themes and Deliverables



- **Water Resources Management:**
 - Identify water-deficit risk areas under climate change
 - Recommend options for water policy and planning at the regional, provincial and inter-provincial scales
 - Develop innovative water-conservation approaches
 - MB focus- Assiniboine River Basin area

- **Drought and Excessive Moisture:**
 - Develop guidance, recommendations and best practices for decision-makers at the local and provincial level
 - Facilitate knowledge sharing across the Prairie region
 - MB: Municipal adaptive planning workshops and planning processes; Partners are SWA and MB Municipal governments

Themes and Deliverables

- **Terrestrial (forestry/grassland) Ecosystems**
 - Assess vulnerability of forest and grassland landscapes and recommend adaptation strategies
 - MB: focus on grassland work in Assiniboine River Basin area; application of AB SRD adaptation framework together with SRC
- **Coordination, Forums, Integration and Management:**
 - Inter-provincial/jurisdiction meetings, forums, progress monitoring, evaluation, communication, project management, RAC Integration Committee

PRAC Key Institutional Partners



Saskatchewan
Watershed
Authority





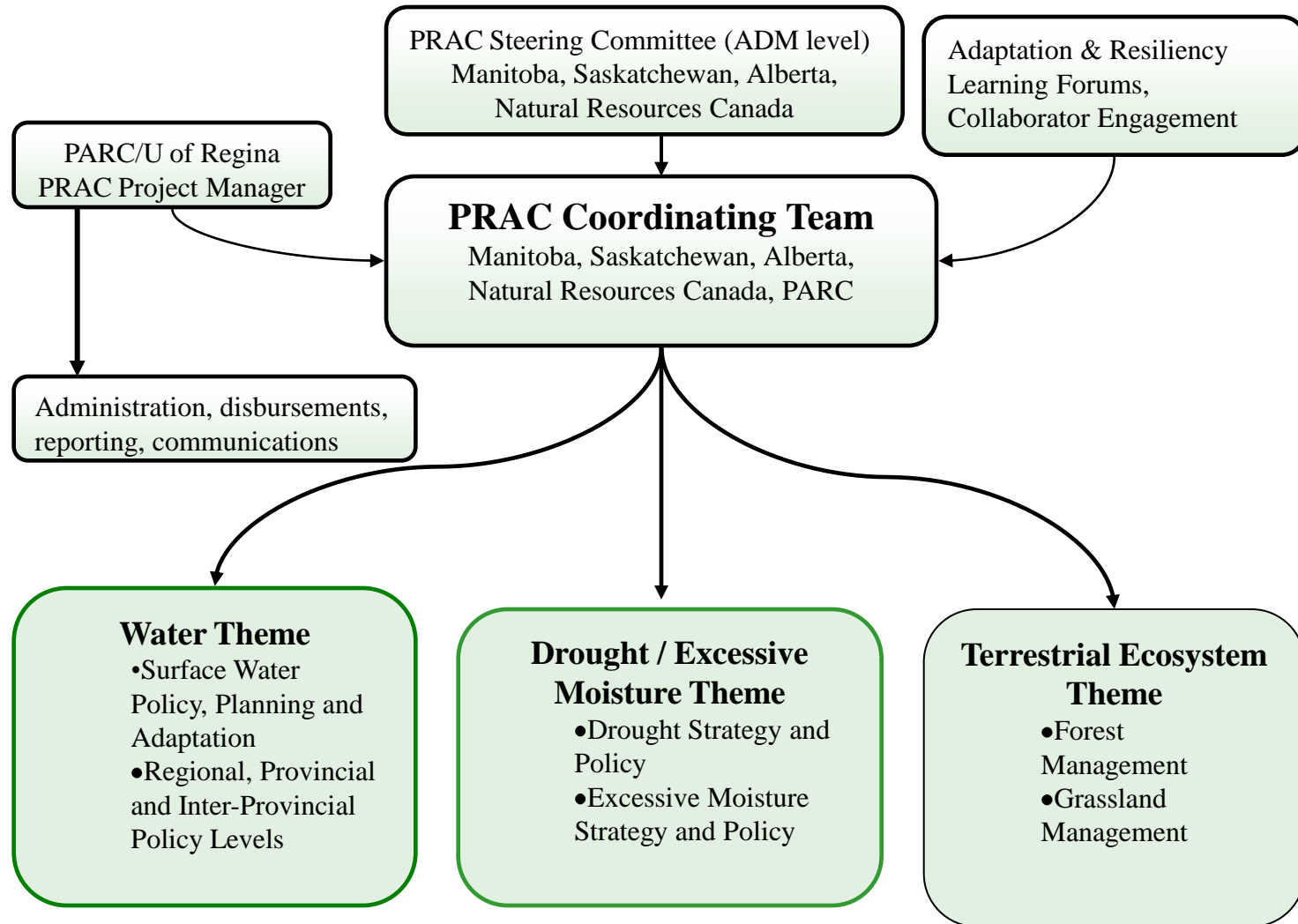
MB PRAC Inter-departmental Working Group

- Manitoba Conservation
- Manitoba Agriculture, Food & Rural Initiatives
- Manitoba Water Stewardship
- Local Government

Other MB Institutional Partners:

International Institute of Sustainable Development (IISD), MB Municipal Governments

PRAC Governance Model



Key Approaches

- MB PRAC addresses enhanced and proactive planning or preparation that reduces vulnerabilities of local governments, sectors or ecosystems to the range of current and future climate, including extreme events.
- Information sharing, communication, collaboration within and across departments, with other levels of government and across provincial boundaries

Key Approaches

- Use of best available information on climate science & impacts and in a comprehensible and usable form
- Risk-based approach via vulnerability assessment and development of adaptation options
- Working with decision-makers throughout planning and implementation

Key Issues

- Lack of sufficient resources in light of competing priorities:
 - Funding for projects and research
 - Human resources (dedicated staff and expertise)
 - Precise models and forecasts
- Lack of examples of “start to finish” projects to use as success stories

Conclusion

- Key issues are related to water scarcity, variability and watershed management.
- Commitment to advancing climate change adaptation is ongoing within and across jurisdictions.
- PRAC initiative is being supported by a strong and evolving collaborative framework.

PRAC Website

<http://www.parc.ca/rac/index.php?page=water>

Thank You!

Ramon Sales, Jr.

ramon.sales@gov.mb.ca

945-8161