

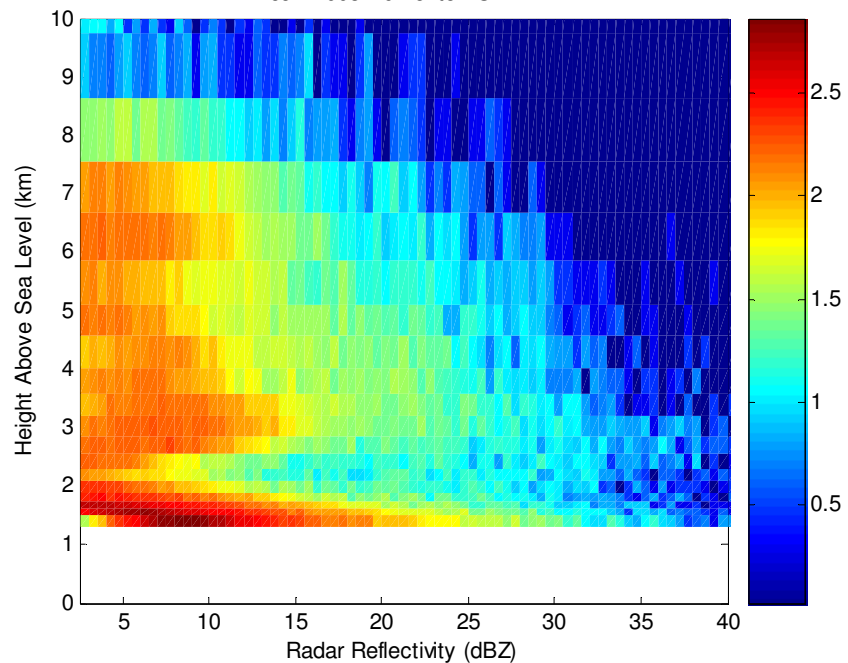
Data

- Obtained many years of Carvel (WHK) data from the EC radar network
 - 2000/01/02
 - 2008/09
- Close to sounding site, had corrected precip., etc.
- Some data issues with 2000/01

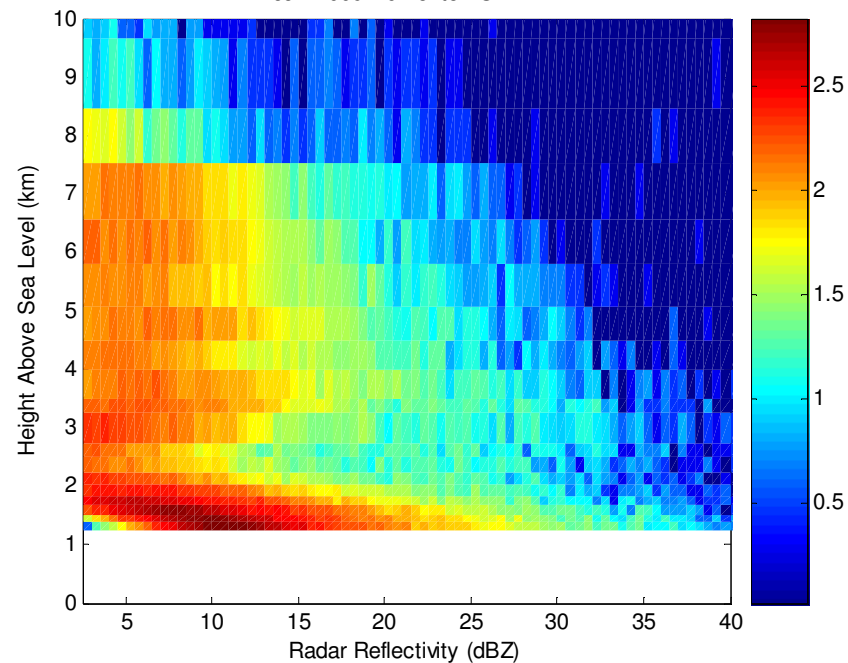
Method

- Decode the data and take vertical profiles over a single site
- 10 minute temporal resolution so lots of data
- Currently plotting contoured frequency diagrams (CFADs) for summer and fall seasons

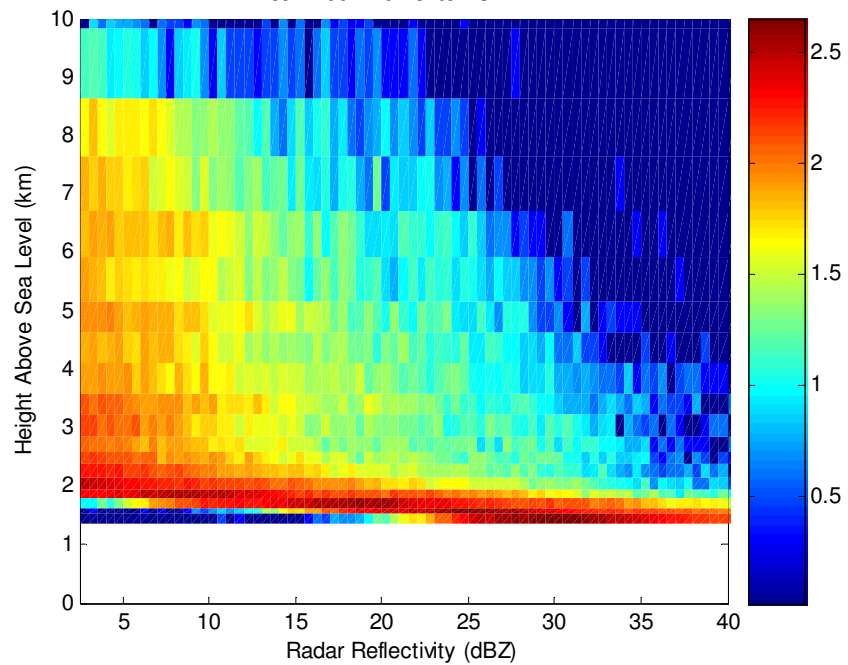
JJA 2008 Edmonton CFAD



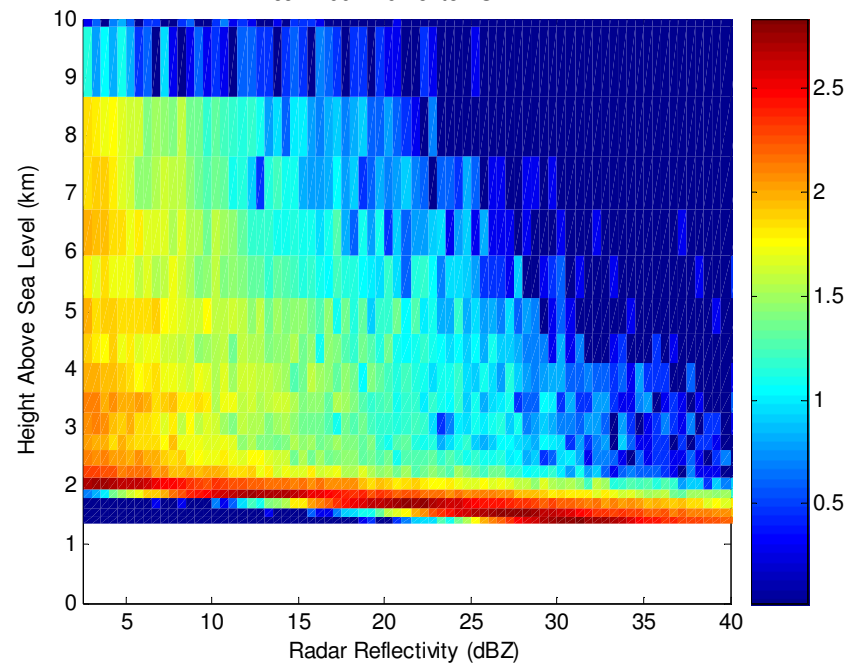
JJA 2009 Edmonton CFAD



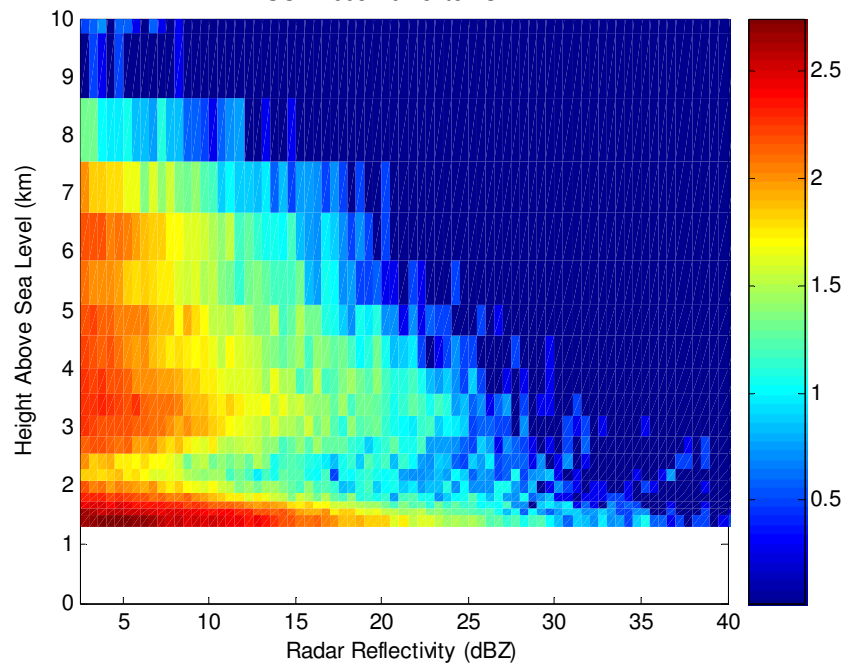
JJA 2001 Edmonton CFAD



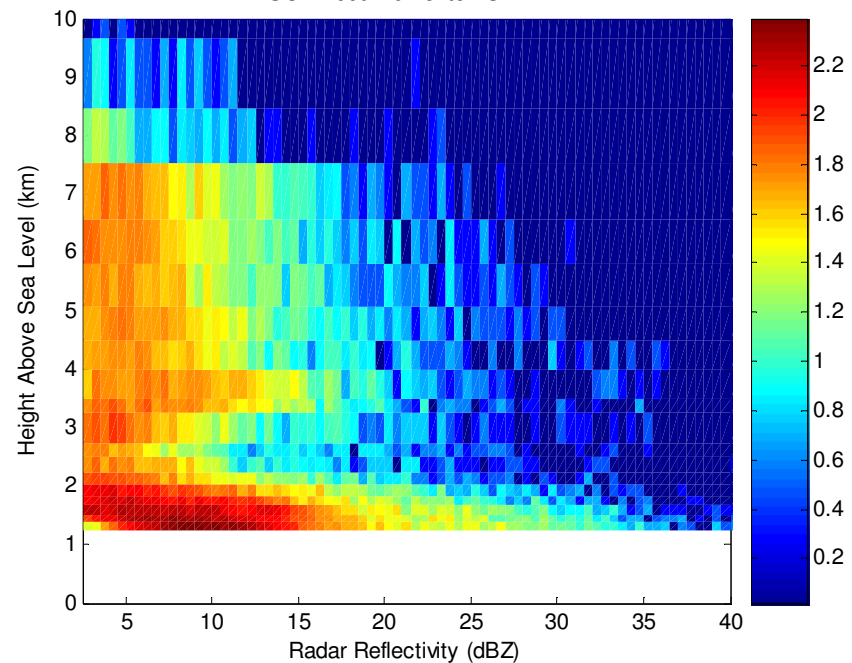
JJA 2002 Edmonton CFAD



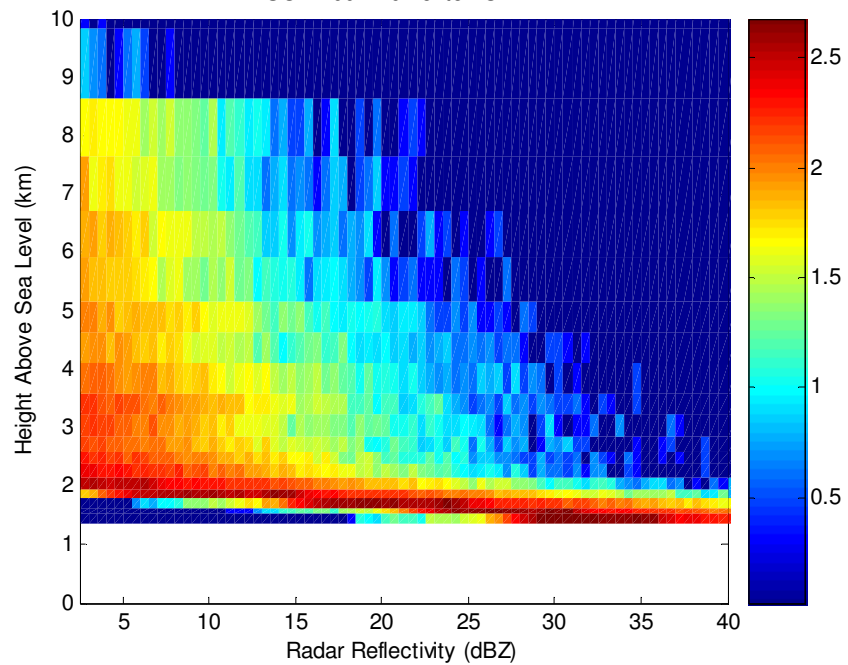
SON 2008 Edmonton CFAD



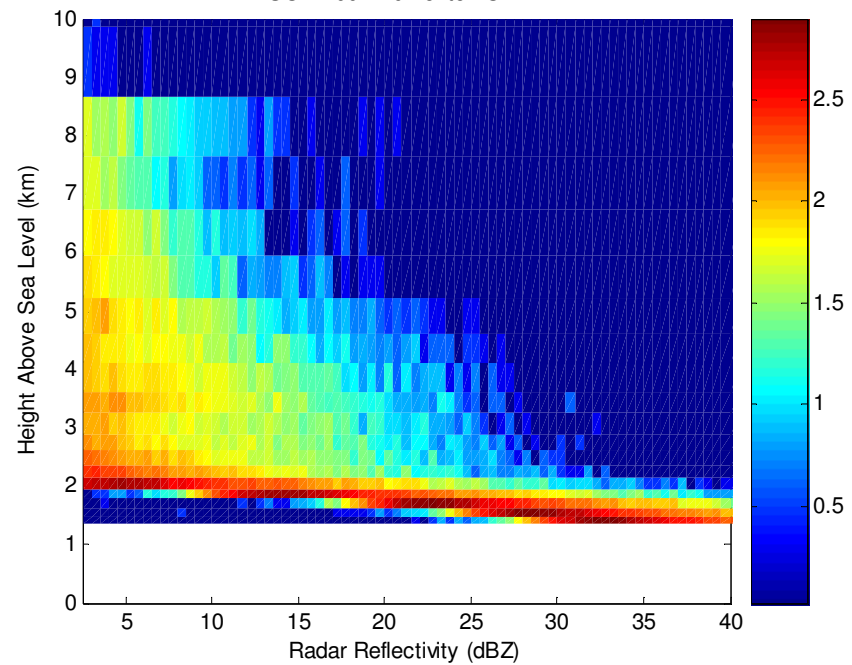
SON 2009 Edmonton CFAD



SON 2001 Edmonton CFAD



SON 2002 Edmonton CFAD



Results so far ?

- Summer has greater values than fall*
- 2001/02 lesser values than 2008/09*

* - a radar artifact?