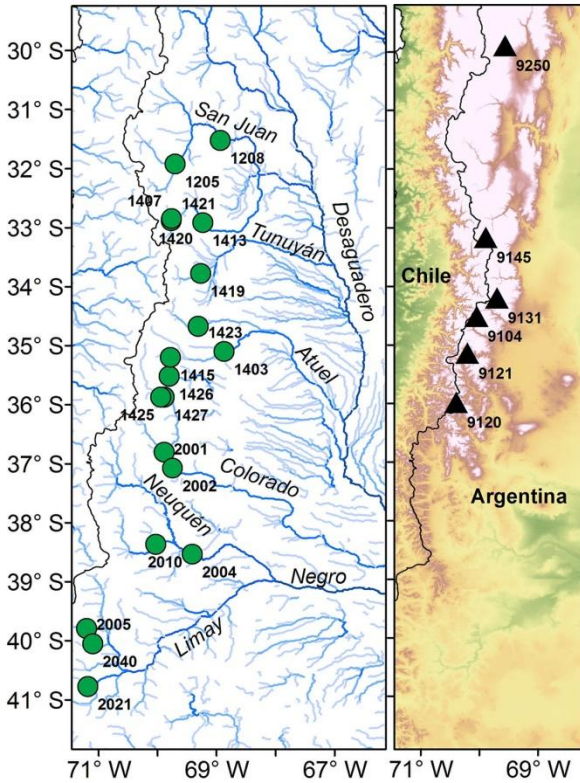


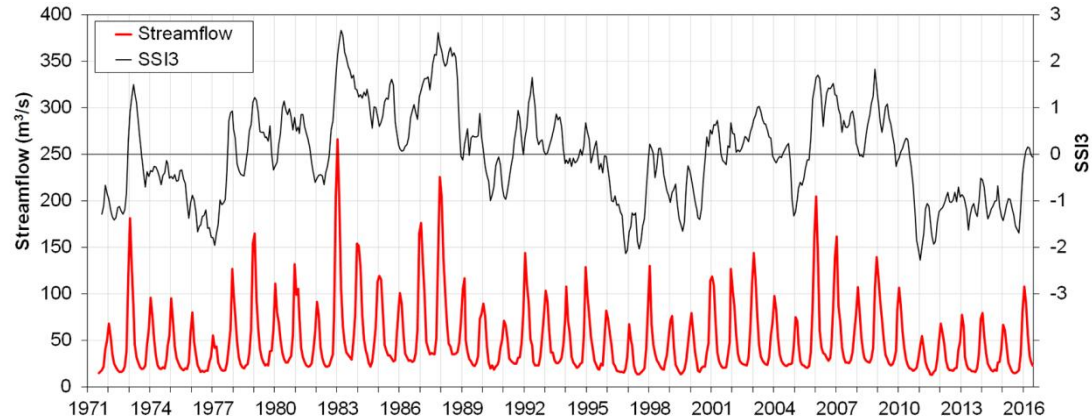
Ensemble Empirical Mode Decomposition for streamflow data analysis in snow-fed rivers of the Central Andes of Argentina

Juan Antonio Rivera^{1,2}, Ricardo Villalba¹, Diego Araneo^{1,3} and Olga C. Penalba^{4,5}

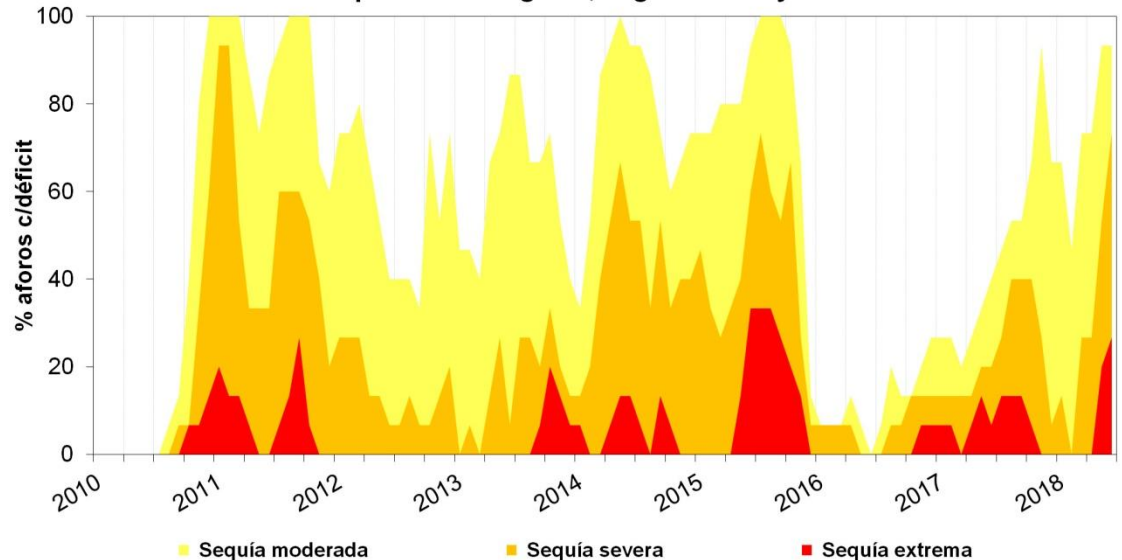
(1) Instituto Argentino de Nivología, Glaciología y Ciencias Ambientales (IANIGLA), CCT Mendoza/CONICET, Mendoza, Argentina; (2) Facultad de Ciencias Veterinarias y Ambientales, Universidad Juan Agustín Maza, Mendoza, Argentina; (3) Facultad de Ciencias Exactas y Naturales, Universidad Nacional de Cuyo, Mendoza, Argentina; (4) Departamento de Ciencias de la Atmósfera y los Océanos (DCAO), Universidad de Buenos Aires, Buenos Aires, Argentina; (5) Consejo Nacional de Investigaciones Científicas y Técnicas (CONICET), Buenos Aires, Argentina. Email: jrivera@mendoza-conicet.gov.ar



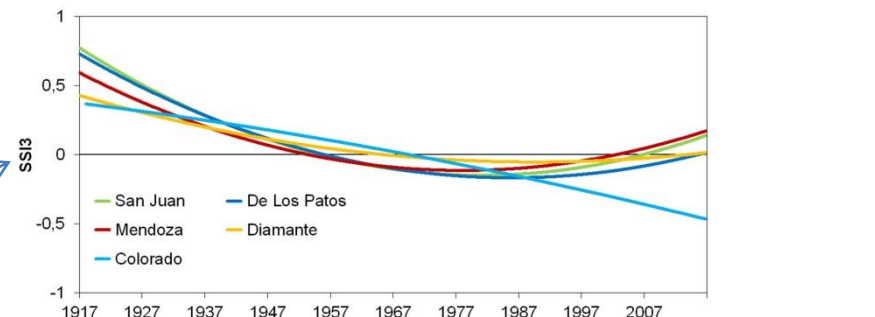
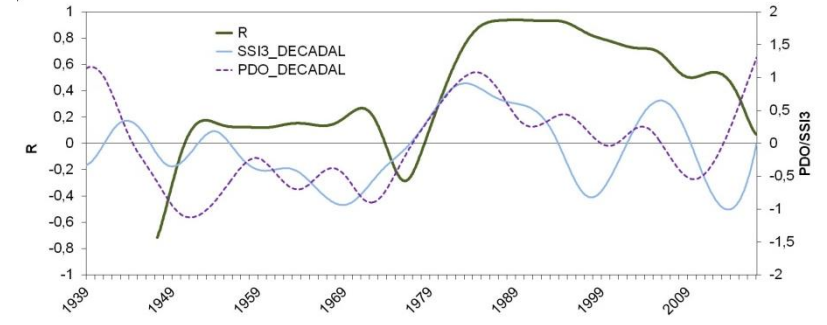
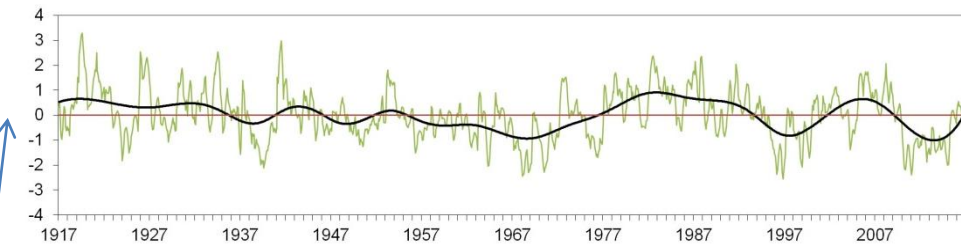
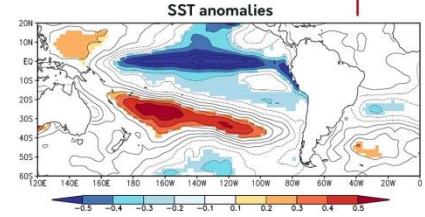
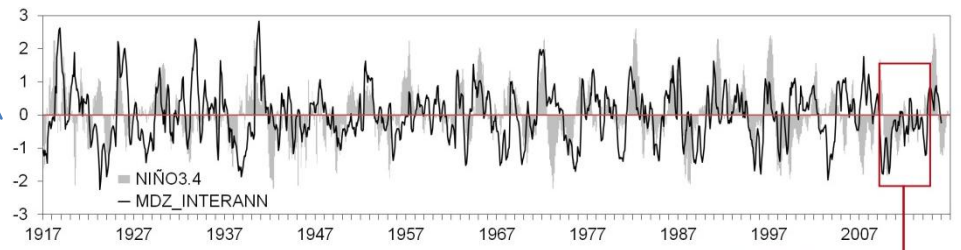
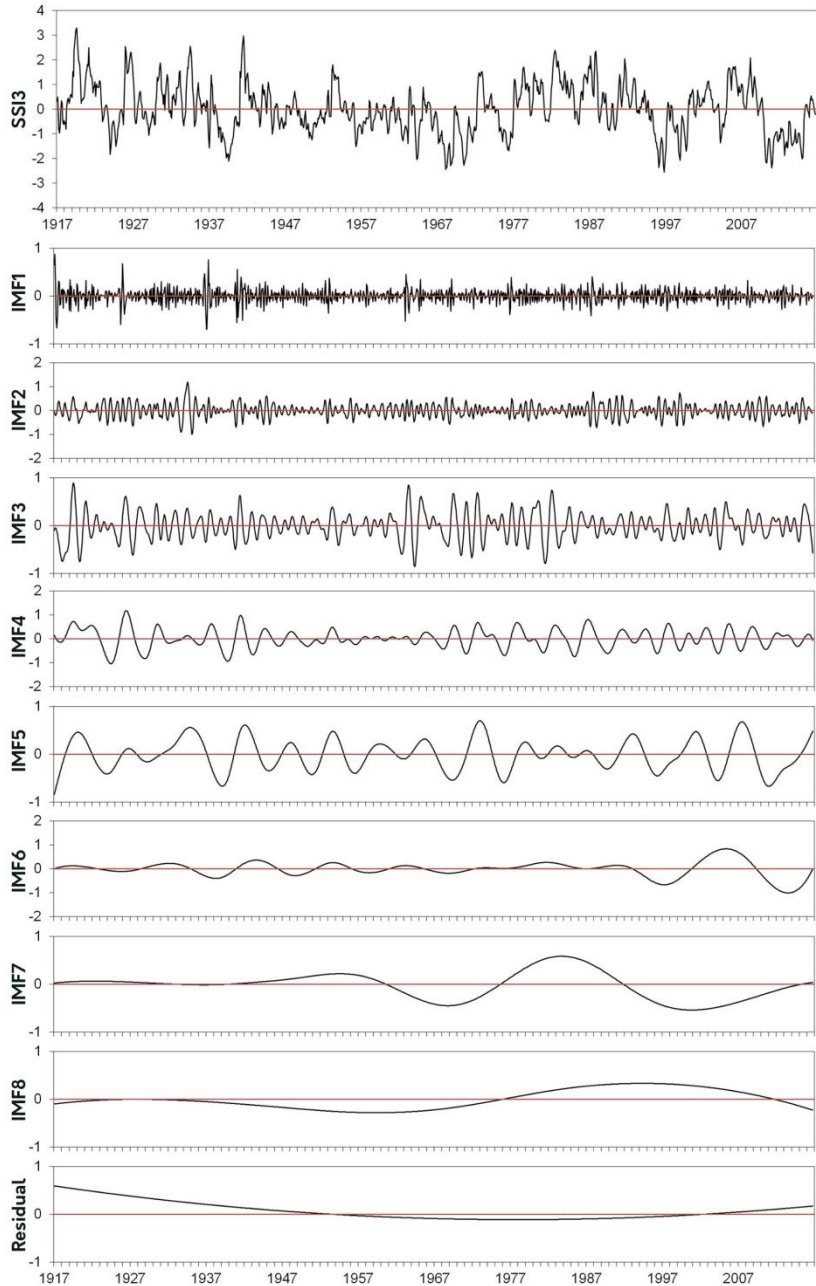
SSI3 – Mendoza river



Monitoreo de sequías hidrológicas, región de Cuyo - PRM/IANIGLA



SSI3 EEMD – Mendoza river



Climate forcings

