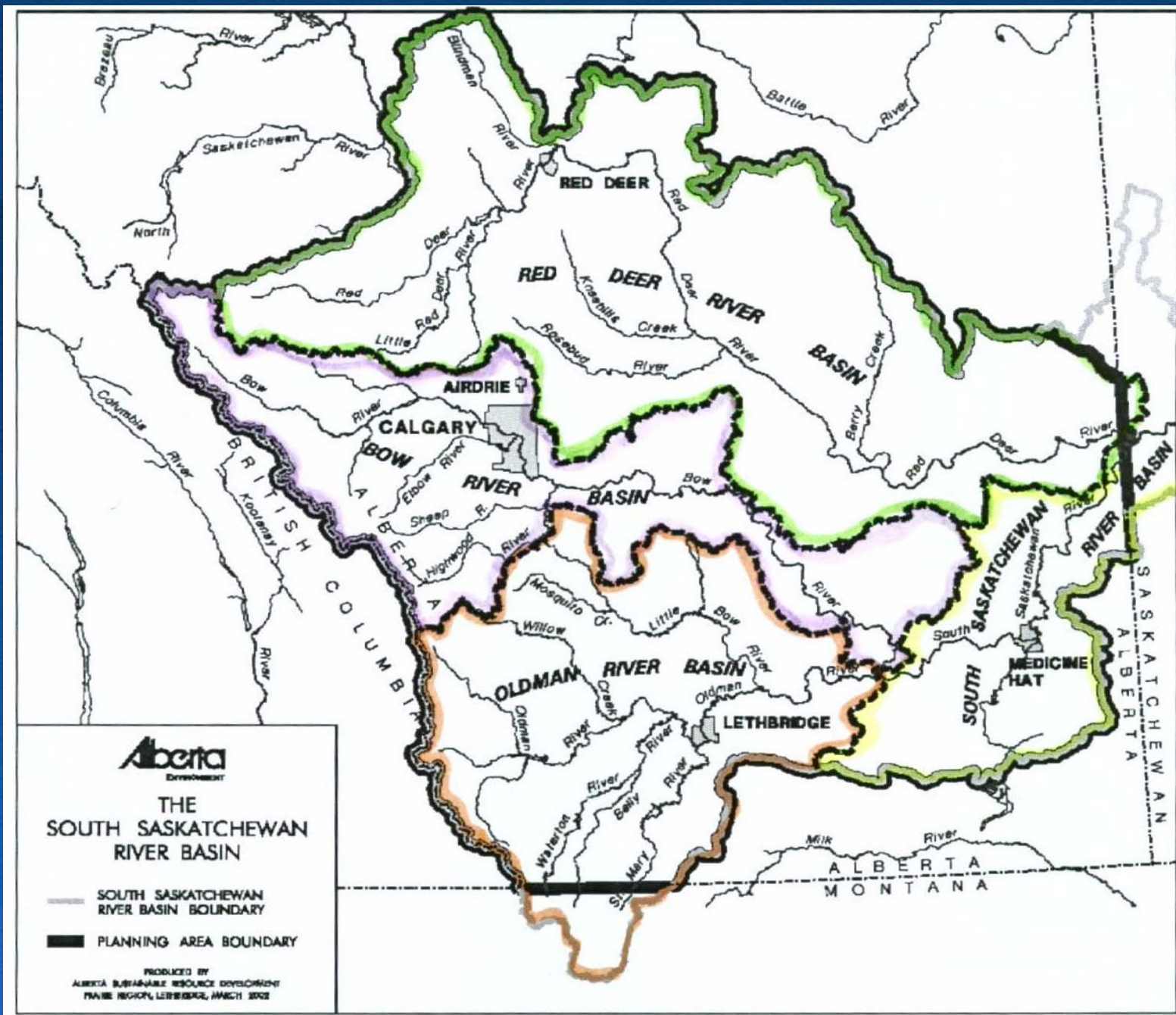


IP3 in Canmore



SSRB



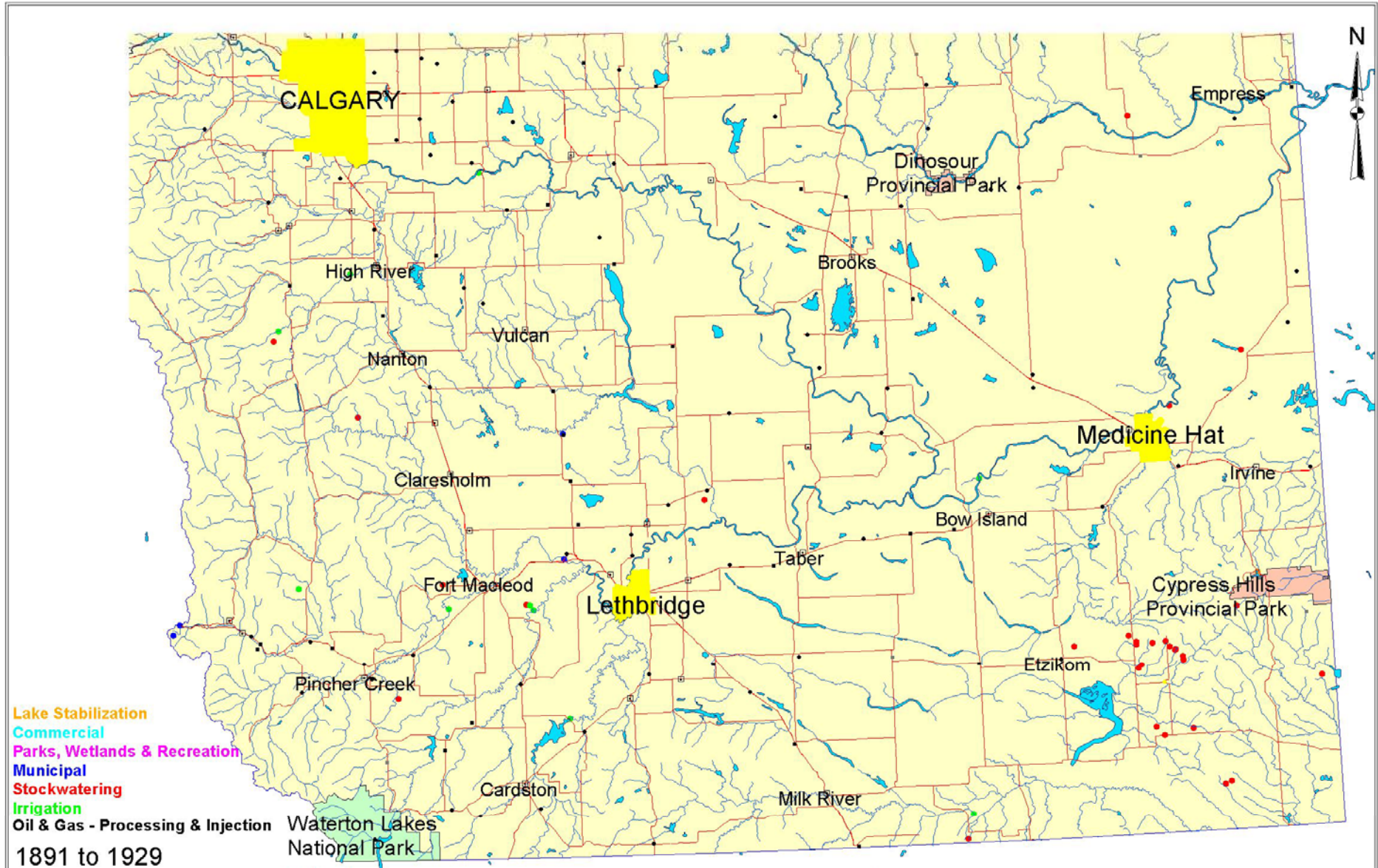


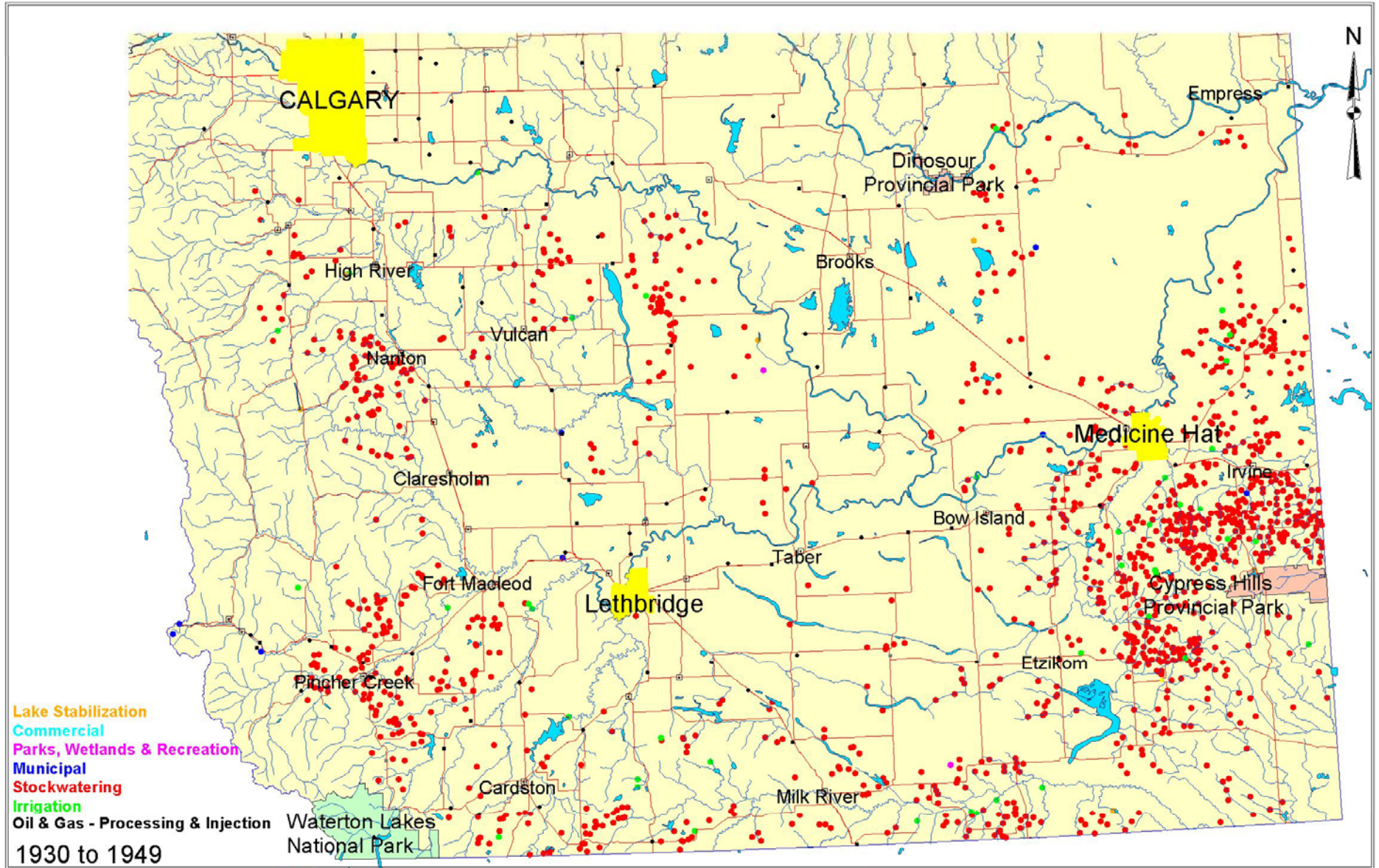
Alberta
Development

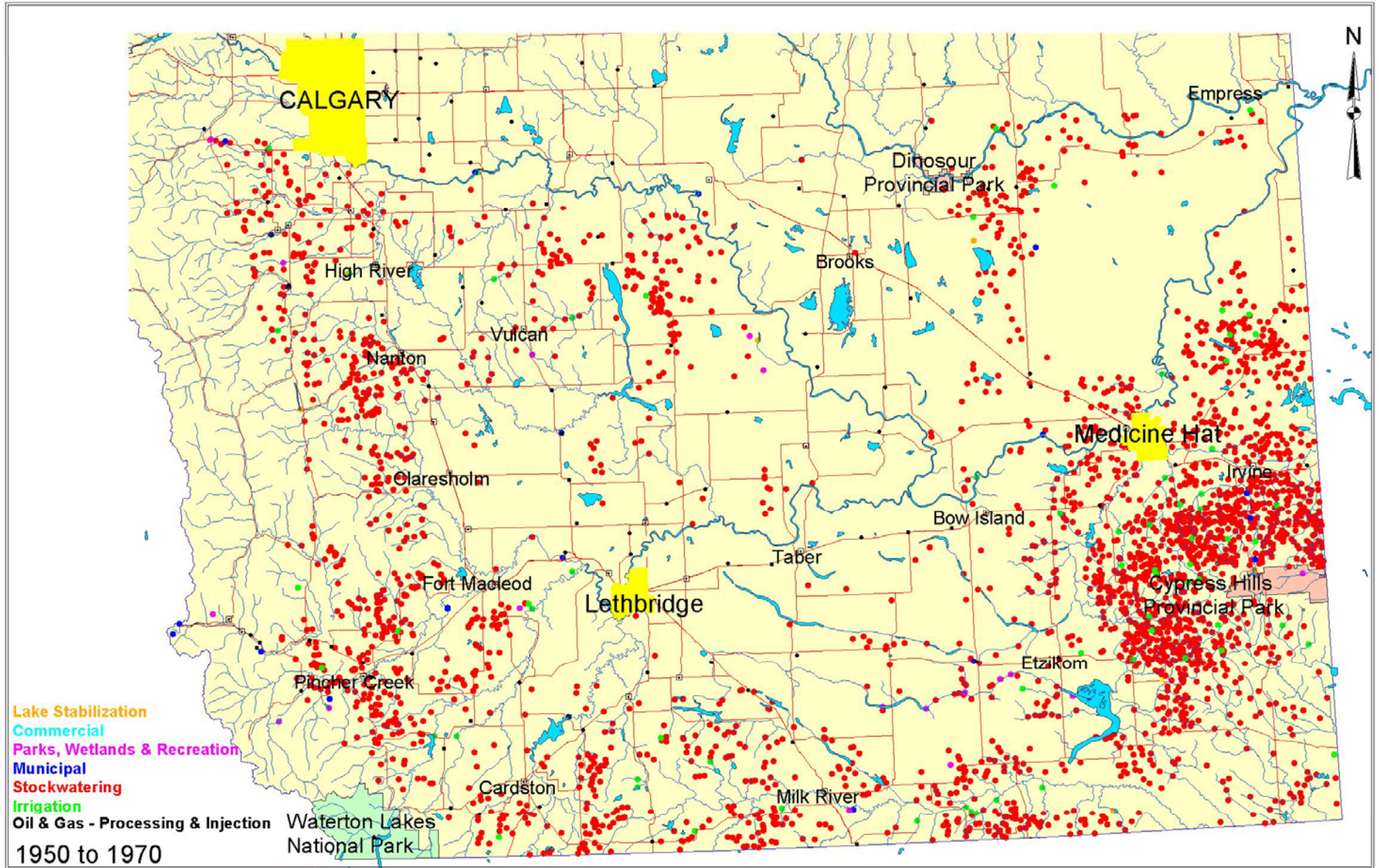
THE SOUTH SASKATCHEWAN RIVER BASIN

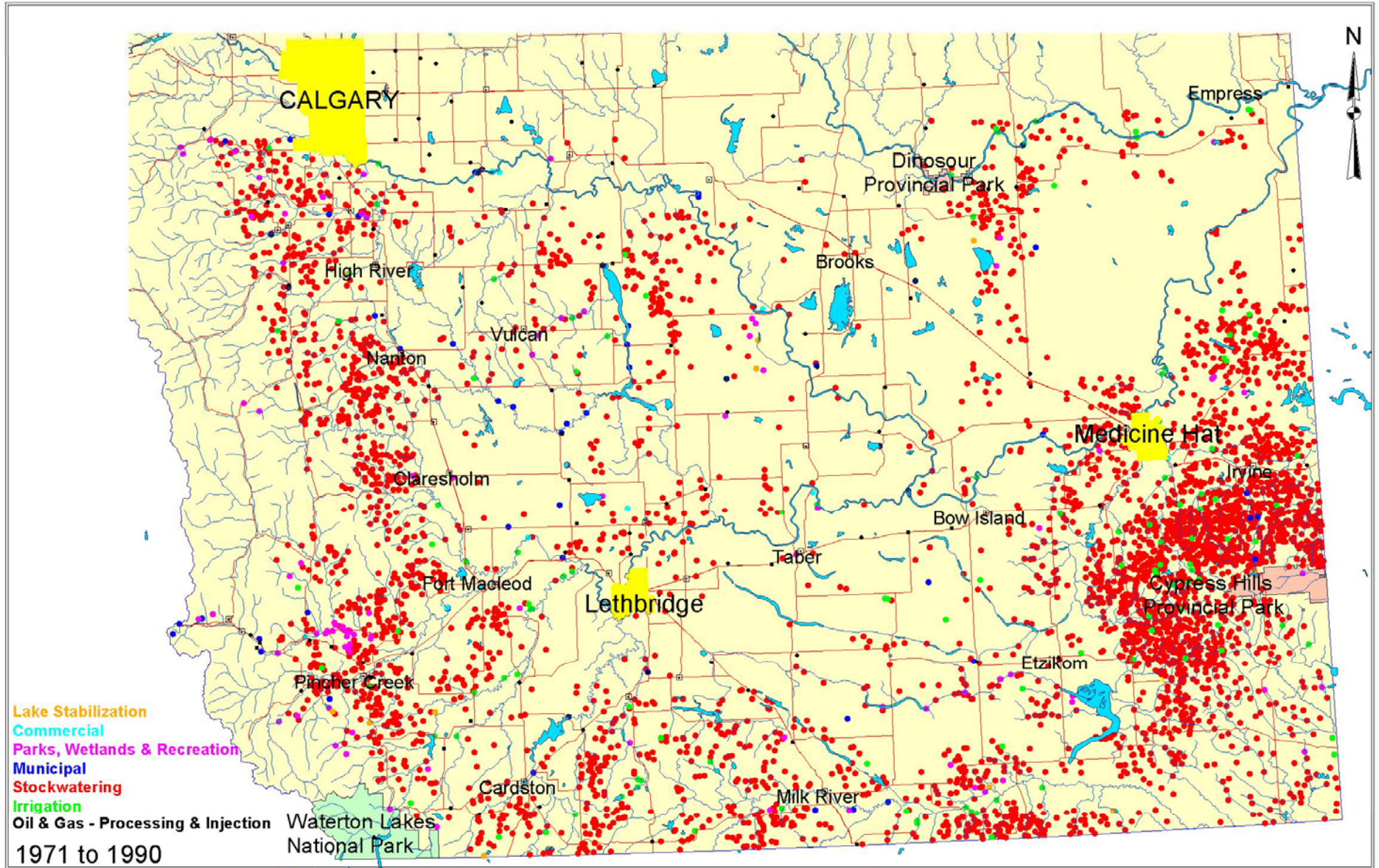
- SOUTH SASKATCHEWAN RIVER BASIN BOUNDARY
- PLANNING AREA BOUNDARY

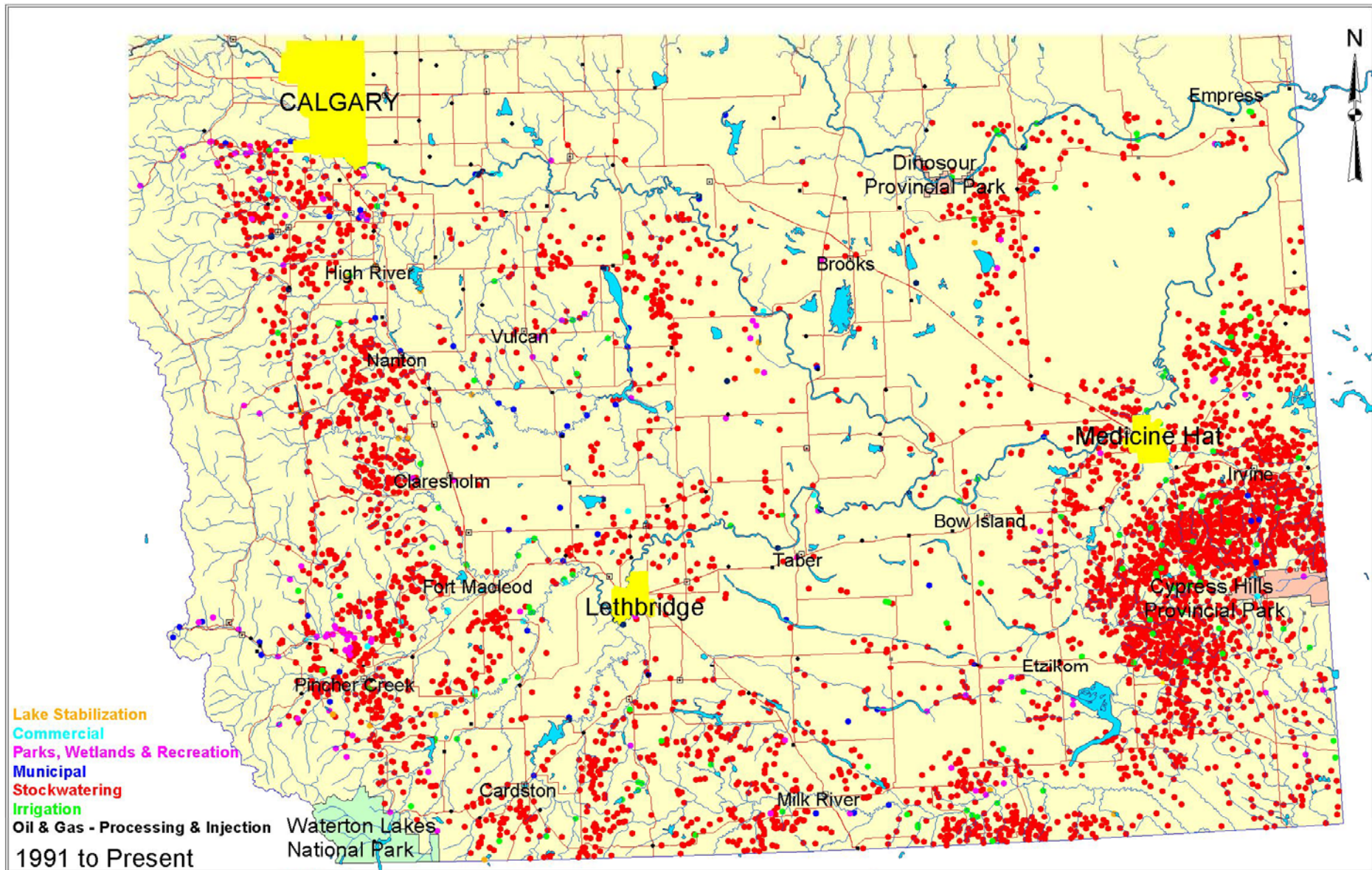
PRODUCED BY
ALBERTA SUSTAINABLE RESOURCE DEVELOPMENT
PRAIRIE REGION, LETHBRIDGE, MARCH 2002



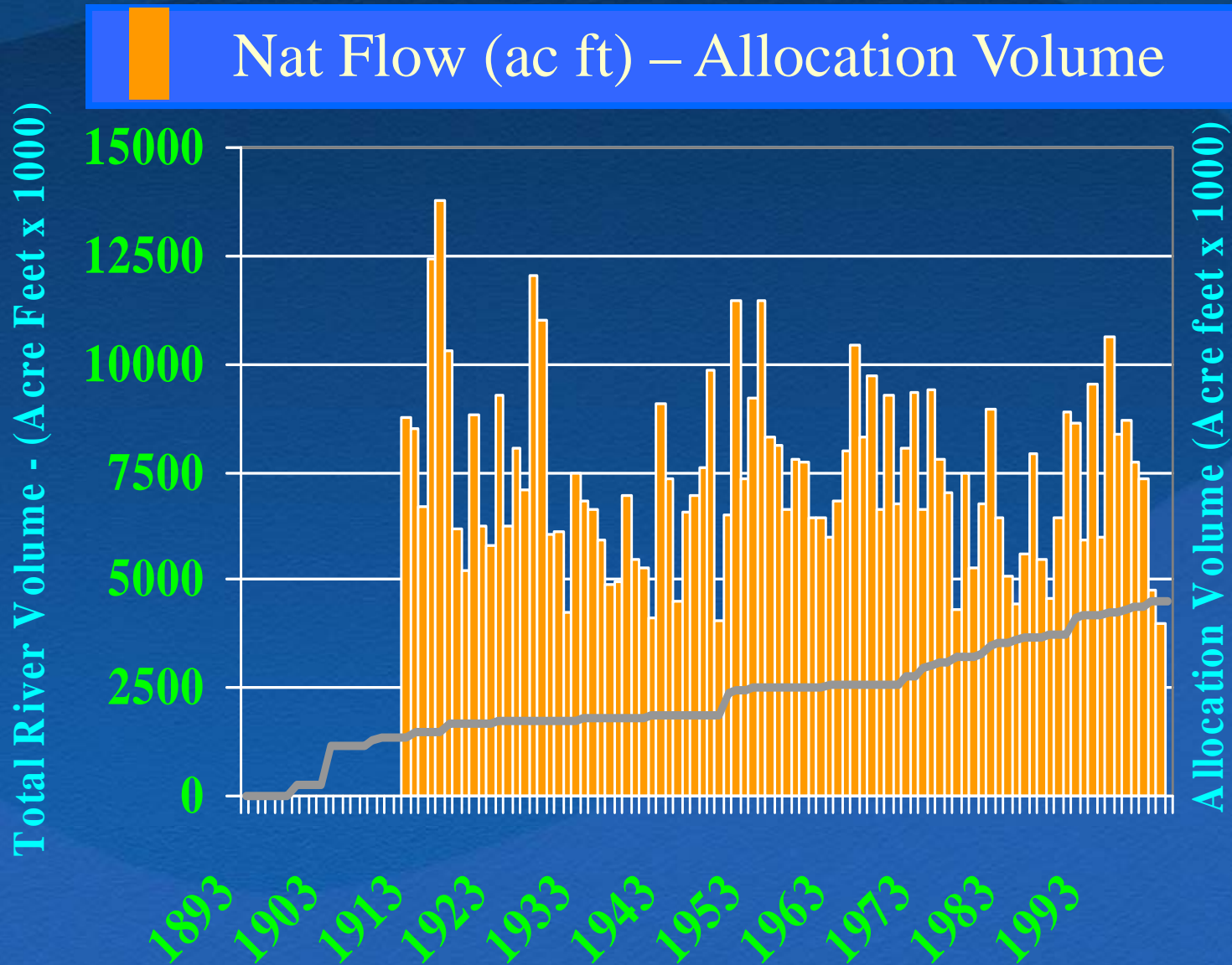




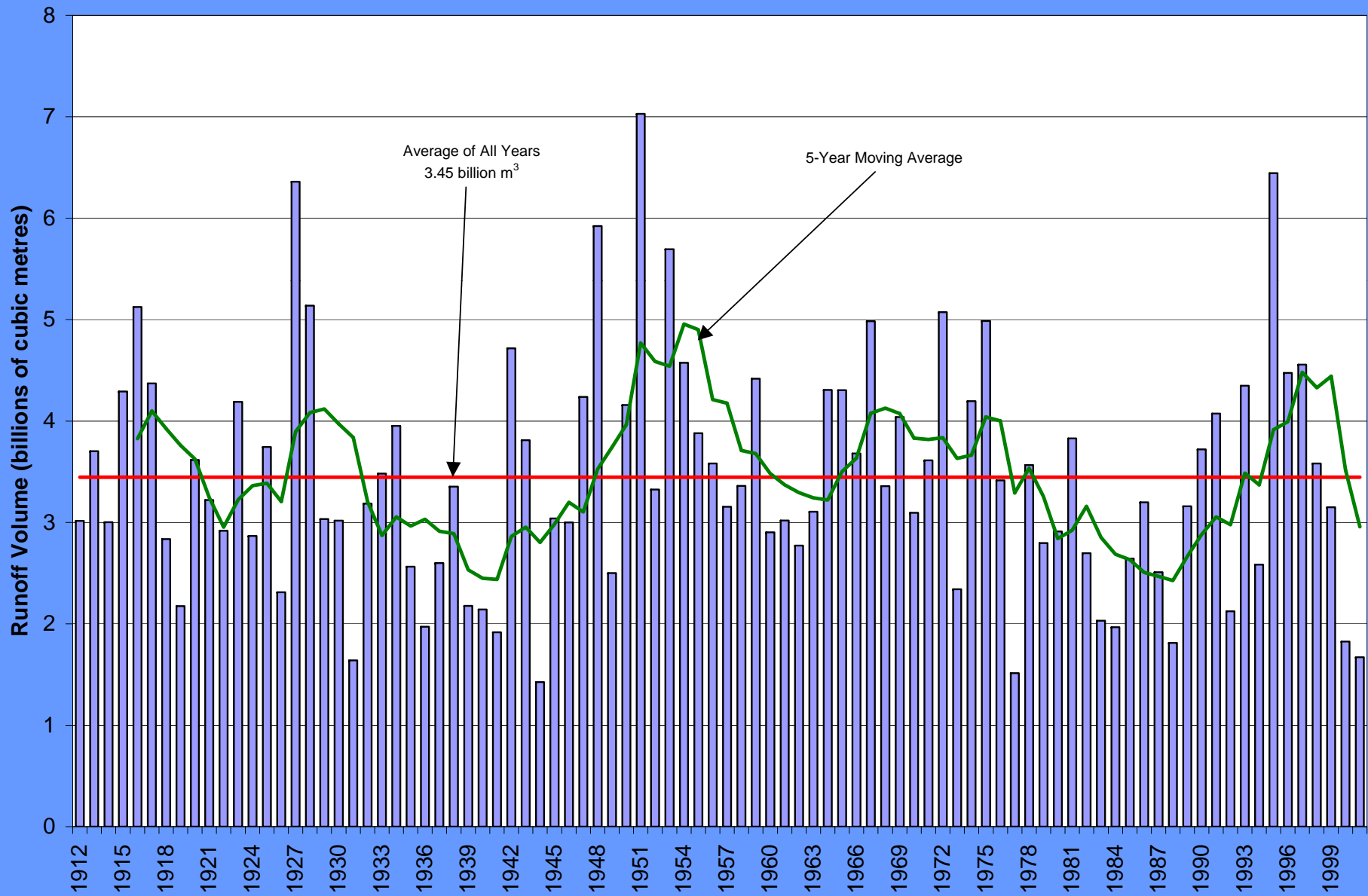




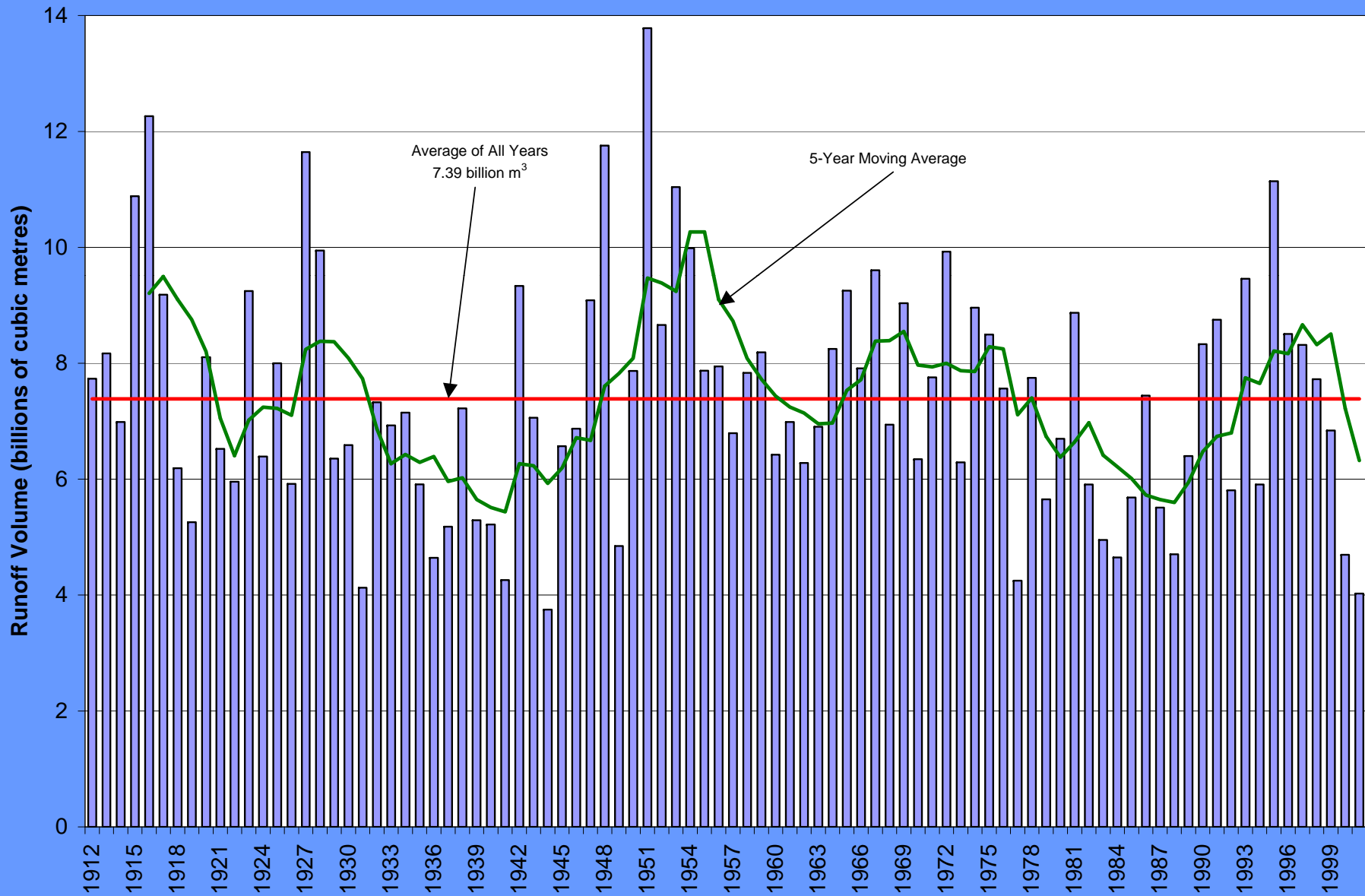
Water Allocation -SSRB



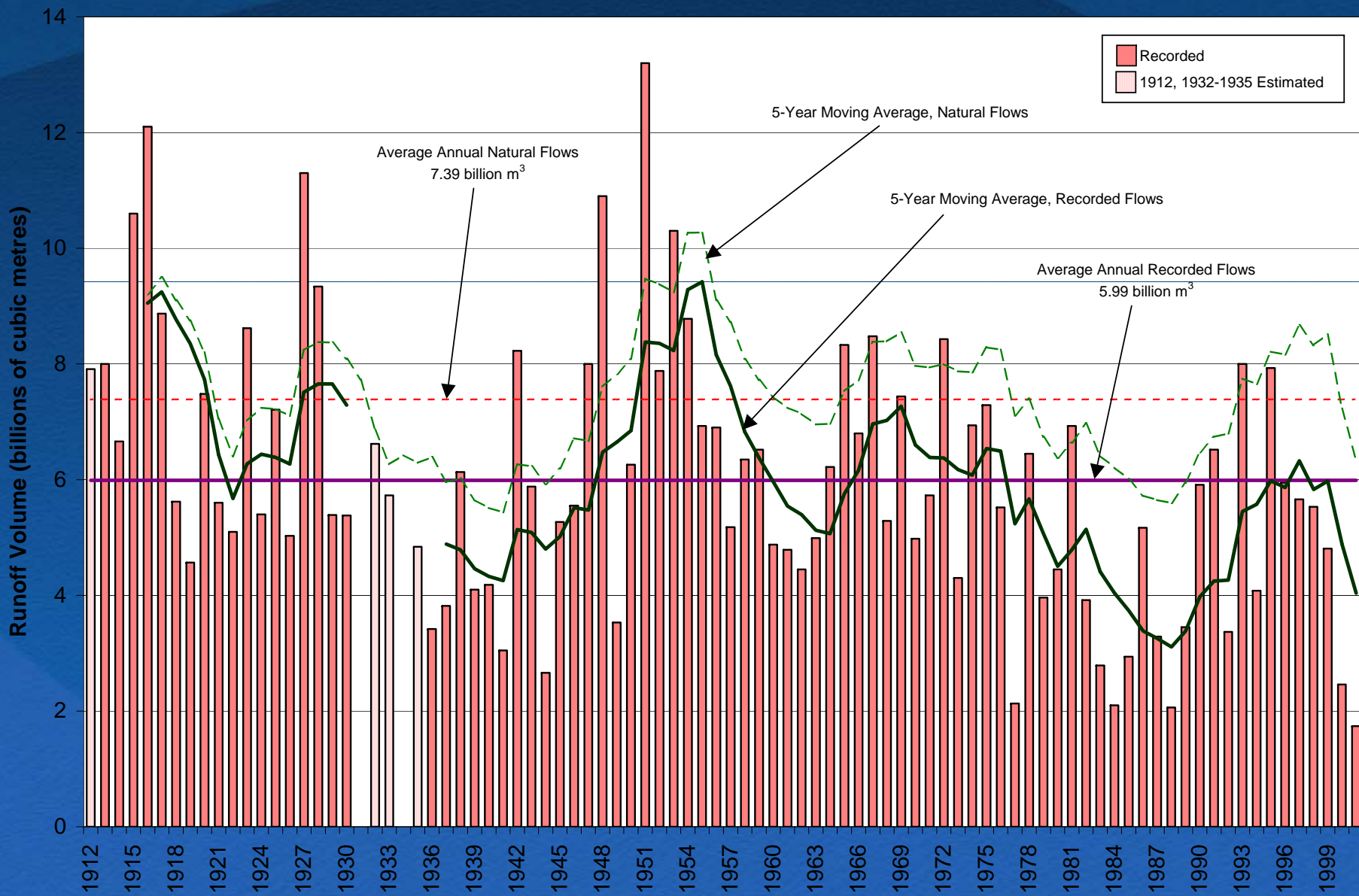
Naturalized Annual Runoff Volume for the Oldman River near Lethbridge



Naturalized Annual Runoff Volume for the South Saskatchewan River at Medicine Hat



Recorded Annual Runoff Volume for the South Saskatchewan River at Medicine Hat (WSC # 05AJ001)





For more information:
www.gov.ab.ca/env/water

